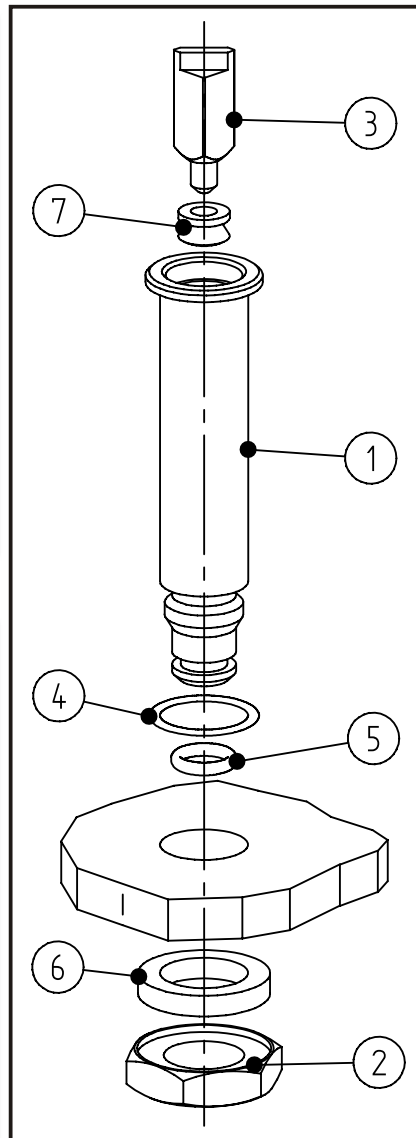
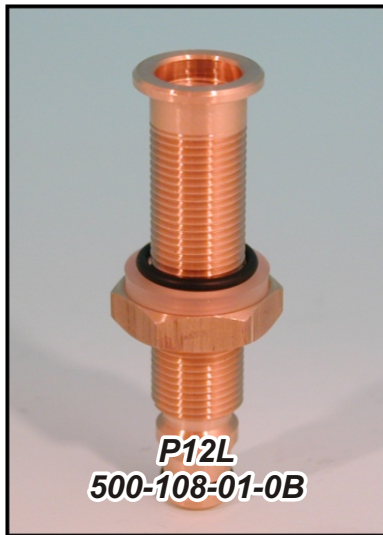


Air jets

Index: 2006-05-08

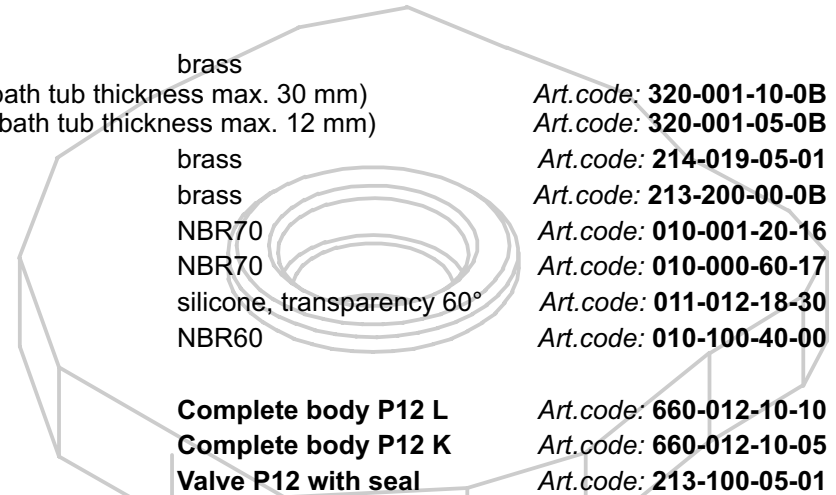


Body P12L and P12K



Description:

- 1. **Body** brass
Body long version (bath tub thickness max. 30 mm)
Body short version (bath tub thickness max. 12 mm)
- 2. **Nut** brass
- 3. **Non-return valve** brass
- 4. **O-ring** NBR70
- 5. **O-ring** NBR70
- 6. **Silicone seal** silicone, transparency 60°
- 7. **V-Seal** NBR60



Jet heads at other data sheet

